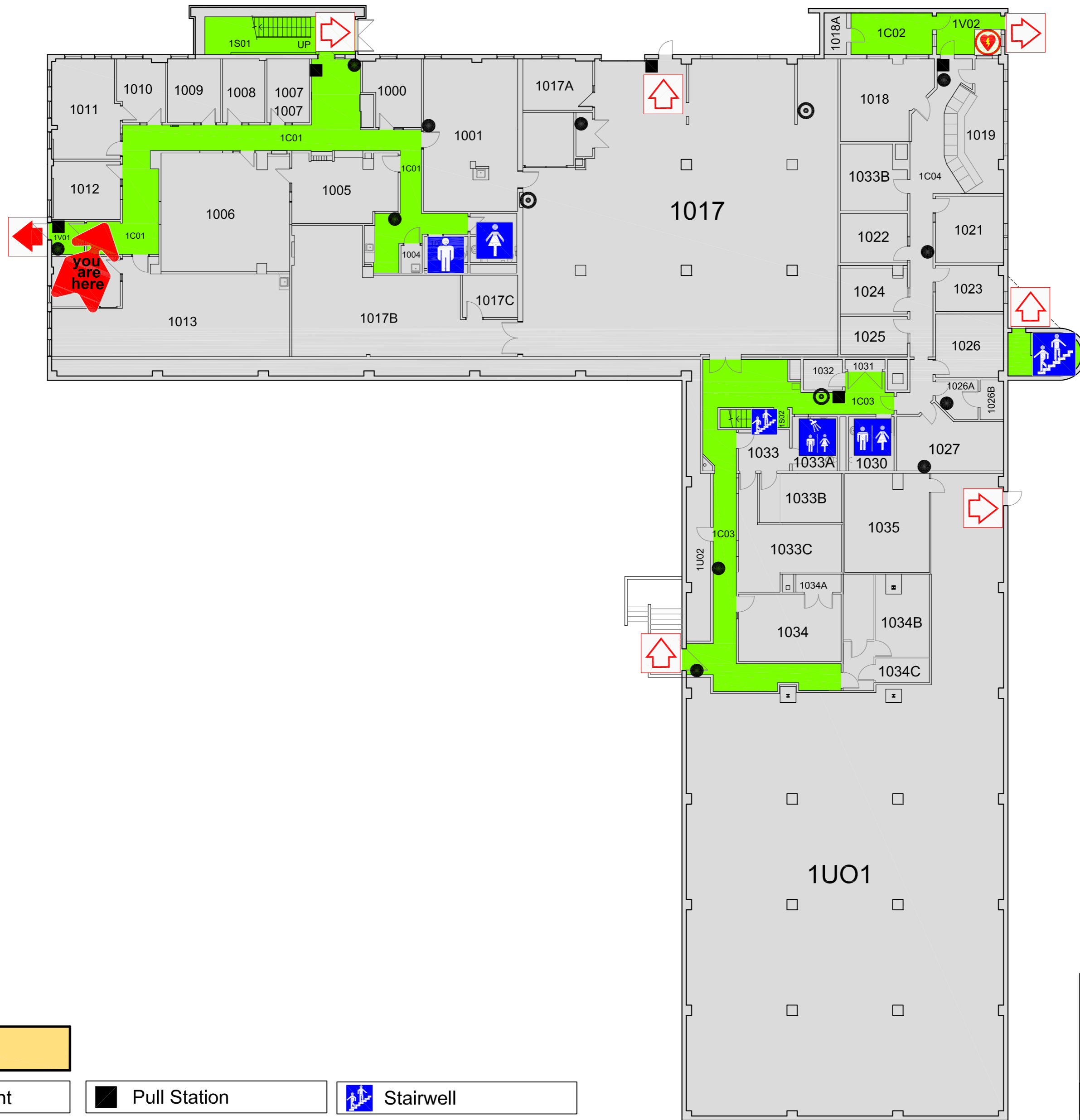


# FACILITIES MANAGEMENT

## LEVEL 1 - EMERGENCY EVACUATION & LOCATION PLAN



### Legend:

Assembly Point	Pull Station	Stairwell
Primary Exit	Fire Extinguisher	Automated External Defibrillator (AED) (Inside 2C03)
Secondary Exit	Fire Hose Cabinet	Washrooms
Corridors / Stairwells	Shower/Washrooms	
Rooms / Building		

### If The Fire Alarm Sounds:

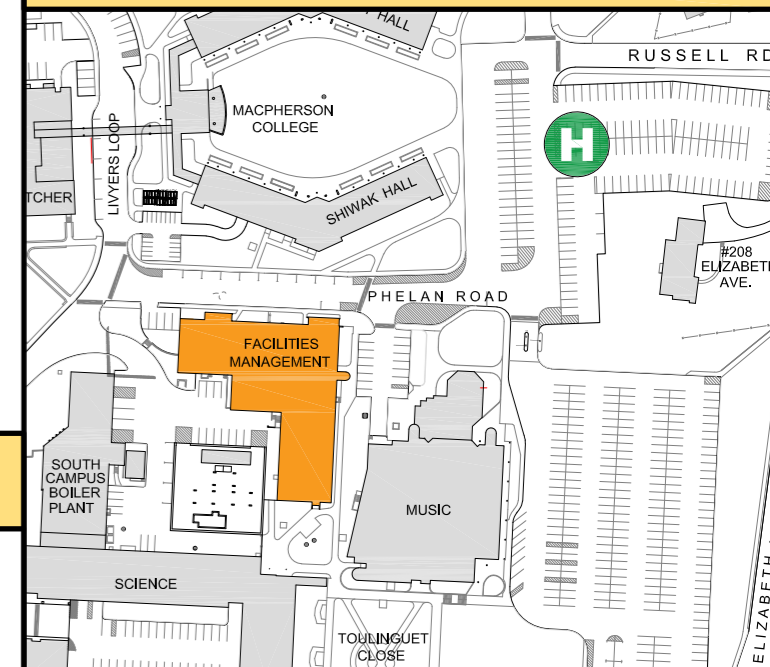
1. Stop all work and remain calm;
2. Evacuate IMMEDIATELY using the nearest safe exit, proceed outside, and clear the building to a minimum distance of 100 m (300 feet) to the nearest assembly point: DO NOT USE ELEVATORS FOR EVACUATION PURPOSES;
3. If you require assistance to evacuate:
  - a. take shelter in a safe location,
  - b. inform someone of your location, and
  - c. ask them to notify CEP or Fire Department (Main Entrance) of your location.
4. Do not attempt to remove any vehicle from the parking lot/garage;
5. Obey all instructions of the Emergency Wardens and CEP;
6. Comply with Fire Department orders; and
7. Return to the building only when CEP has authorized you to do so.

### If You Discover Fire, See Smoke Or Smell Gas:

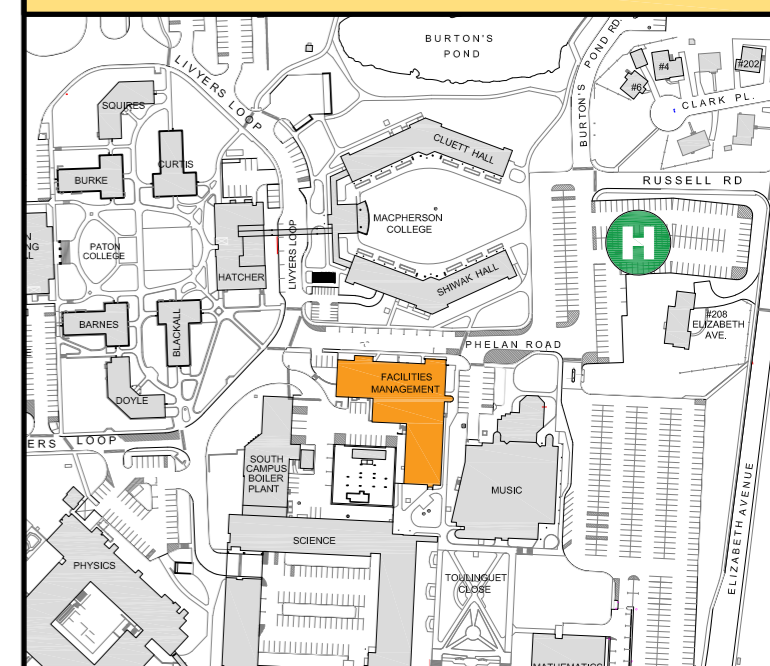
1. Sound alarm to warn occupants; (Fire alarm pull station)
2. Evacuate IMMEDIATELY using the nearest safe exit, proceed outside, and clear the building to a minimum distance of 100 m (300 feet) to the nearest assembly point: DO NOT USE ELEVATORS FOR EVACUATION PURPOSES;
3. If you require assistance to evacuate:
  - a. take shelter in a safe location,
  - b. inform someone of your location, and
  - c. ask them to notify CEP or Fire Department (Main Entrance) of your location.
4. If trained to do so, fight fire using a fire extinguisher only if it is small and not between you and an exit; and
5. Call Campus Enforcement and Patrol at 864-4100

Here's how to find a room, if it is FM-1001:  
**FM -1 001**  
 1st Level \_\_\_\_\_ Room No.

### ASSEMBLY POINT LOCATIONS



### KEY PLAN



# FACILITIES MANAGEMENT

## LEVEL 2 - EMERGENCY EVACUATION & LOCATION PLAN

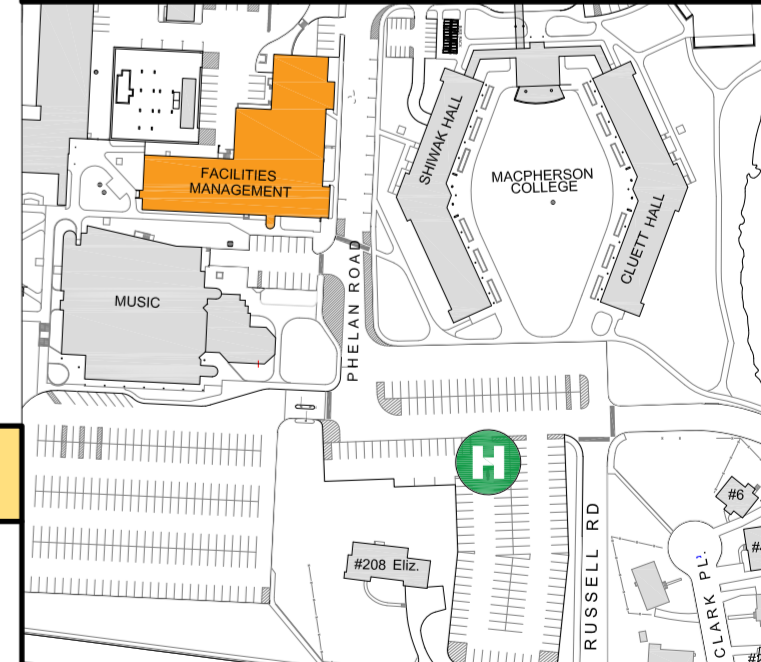


### Legend:

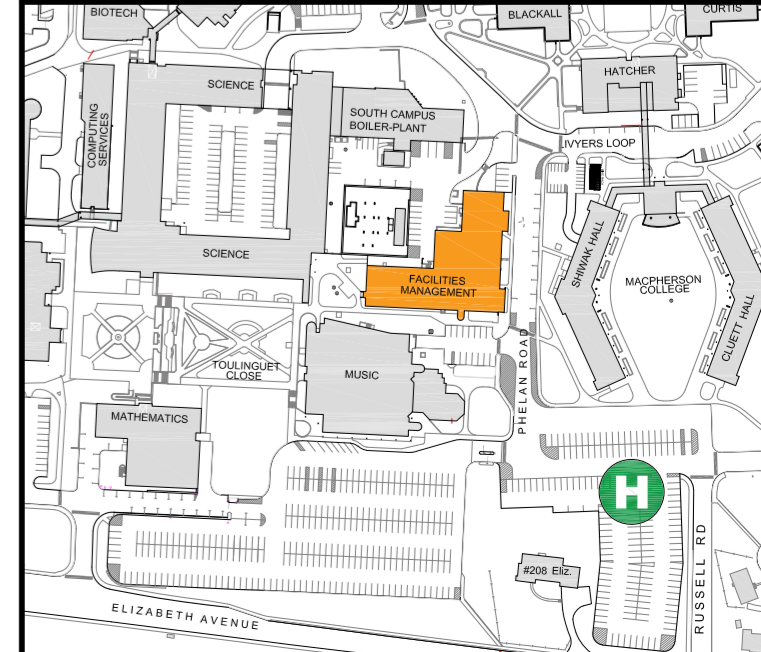
Assembly Point	Pull Station	Automated External Defibrillator (AED) (Inside 1V02)
Primary Exit	Fire Extinguisher	Indicates Access for People with Disabilities
Secondary Exit	Fire Hose Cabinet	Indicates Access for People with Disabilities
Corridors / Stairwells	Washrooms	Indicates Access for People with Disabilities
Rooms / Building	Stairwell	

Here's how to find a room, if it is  
 FM-2001:  
**FM -2 001**  
 2nd Level ——— Room No.

### ASSEMBLY POINT LOCATIONS



### KEY PLAN



### If The Fire Alarm Sounds:

1. Stop all work and remain calm;
2. Evacuate IMMEDIATELY using the nearest safe exit, proceed outside, and clear the building to a minimum distance of 100 m (300 feet) to the nearest assembly point: DO NOT USE ELEVATORS FOR EVACUATION PURPOSES;
3. If you require assistance to evacuate:
  - a. take shelter in a safe location,
  - b. inform someone of your location, and
  - c. ask them to notify CEP or Fire Department (Main Entrance) of your location.
4. Do not attempt to remove any vehicle from the parking lot/garage;
5. Obey all instructions of the Emergency Wardens and CEP;
6. Comply with Fire Department orders; and
7. Return to the building only when CEP has authorized you to do so.

### If You Discover Fire, See Smoke Or Smell Gas:

1. Sound alarm to warn occupants; (Fire alarm pull station)
2. Evacuate IMMEDIATELY using the nearest safe exit, proceed outside, and clear the building to a minimum distance of 100 m (300 feet) to the nearest assembly point: DO NOT USE ELEVATORS FOR EVACUATION PURPOSES;
3. If you require assistance to evacuate:
  - a. take shelter in a safe location,
  - b. inform someone of your location, and
  - c. ask them to notify CEP or Fire Department (Main Entrance) of your location.
4. If trained to do so, fight fire using a fire extinguisher only if it is small and not between you and an exit; and
5. Call Campus Enforcement and Patrol at 864-4100